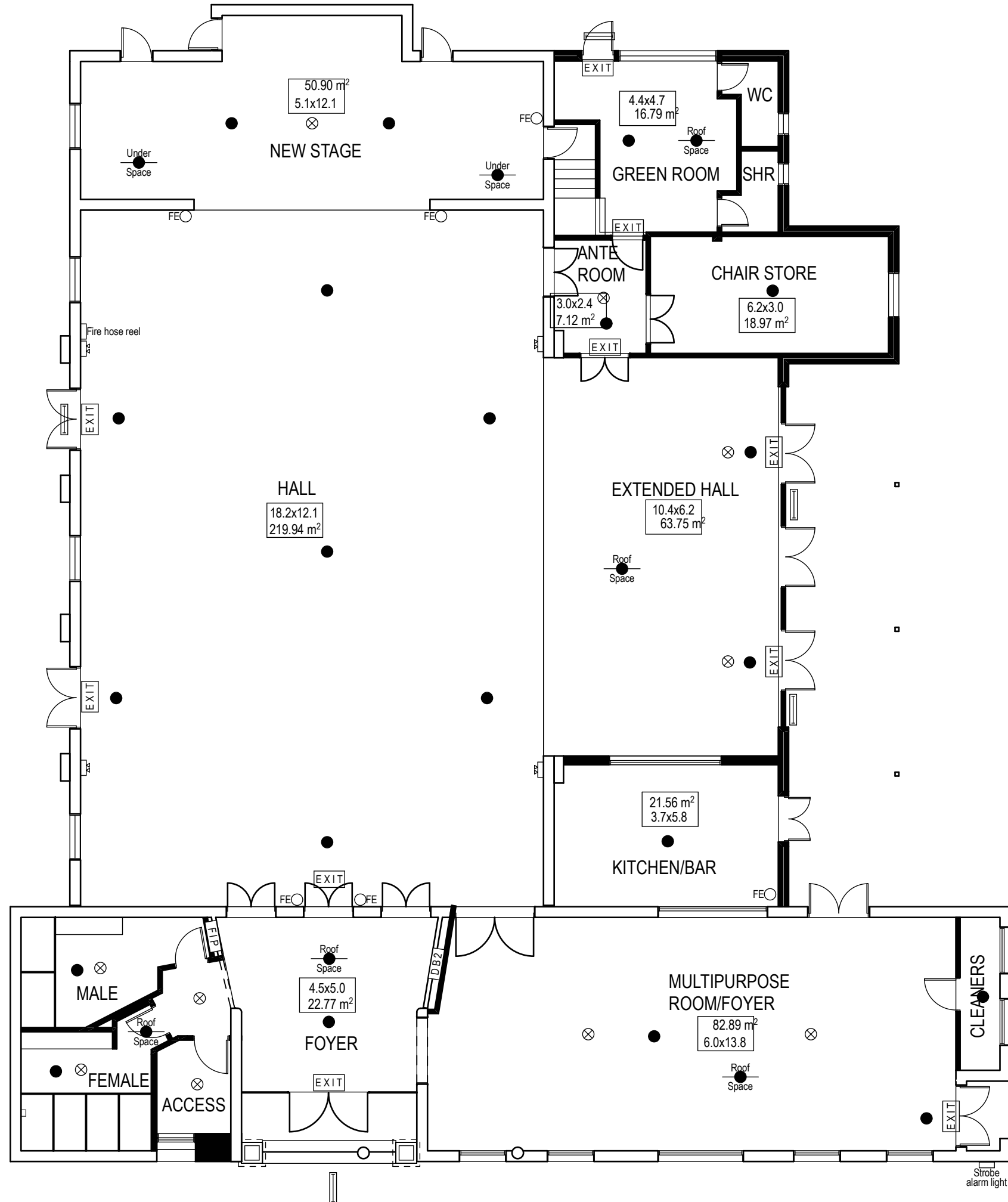


Copyright  
 This drawing shows design features and elements of a design prepared by Fulton Trotter and Partners and is to be used only for work authorised in writing by the designers. It cannot be copied directly or indirectly, in whole or in part, nor shall it be used for any other building purposes. Unauthorised use will be considered an infringement of these rights.



**Legend**

- EXIT (rectangle with X) Emergency exit light
- ROUND (circle with X) Emergency halogen light
- Smoke/heat detector
- FE (circle) Fire extinguisher
- WALLS (circle with dot) Consealed smoke/heat detector
- ▭ Emergency fluorescent light

REV	DESCRIPTION	DATE	INIT.
A	For review	25/01/08	



ARCHITECTURE specialising in  
**EDUCATION** **HEALTH** **COMMUNITY PROJECTS**  
**BRISBANE** **TWEED HEADS** **SYDNEY**  
 6/6 Astor Terrace Level 1 40 Frances Street Level 3  
 P O Box 353 35 Spring Street P O Box 1669  
 Spring Hill QLD 4004 Tweed Heads Bondi Junction  
 NSW 2485 NSW 2485 NSW 2022  
 t. 07 3291 1511 t. 07 5536 6611 t. 02 9369 5941  
 f. 07 3291 1500 f. 07 5536 7174 f. 02 9369 3743  
 www.fultontrtoter.com.au

**PARTNERS**  
 Andrew Armstrong raia NSW 6321 QLD 2814  
 Greg Isaac raia NSW 6855 QLD 2920  
 Mark Trotter fraia NSW 4421 QLD 1670  
 Paul Trotter raia NSW 7177 QLD 2646  
 Robert Wesener raia NSW 5802 QLD 2633

**Byron Shire Council**  
**Mullumbimby Civic Centre**  
 Dalley Street  
 Mullumbimby

**Fire evacuation plan**

Figured dimensions take precedence over scale dimensions. Contractors must verify all dimensions on site before commencing any work or making shop drawings.

SCALE @ A1	PARTNER	DRAWN	CHECKED
Not to Scale	RW	RC	GM
PROJECT NUMBER	DRAWING NUMBER	REVISION	
5216MU01	CA09	A	

75mm @ A3  
 125  
 150  
 175mm @ A3  
 plot date: Friday, 23 May 2008 file location: P:\common\5216mu01 Mullumbimby Civic Centre\DRAWINGS\toilets&entry.pln